

PARIS.

YOUR PARIS.

Here is a fresh look at Paris – a guide for your eyes only. Hidden gems and famous film scene recreations will make your trip as unique as no other. As we've said before: You are a traveller, not a tourist!



THE HIDDEN GEMS

You know the landmarks of Paris – the Eiffel Tower, the Louvre, Notre-Dame. But beyond the postcards and the crowds, there's another side to the City of Light. A quieter, more intimate Paris, full of secret gardens, forgotten passages, and charming corners only locals know.

These hidden gems will show you a city that's just as magical, but far from the beaten path. Ready to discover the Paris most visitors miss?



HIDDEN GEMS

La Petite Ceinture

An abandoned railway transformed into a green walkway, La Petite Ceinture offers a peaceful escape with glimpses into Paris's industrial past.



Parc de Bagatelle

Nestled in the Bois de Boulogne, this park boasts a beautiful rose garden and tranquil landscapes, perfect for a leisurely stroll.



Square du Vert-Galant

Located at the western tip of Île de la Cité, this secluded park offers serene views of the Seine, ideal for a quiet picnic.





HIDDEN GEMS

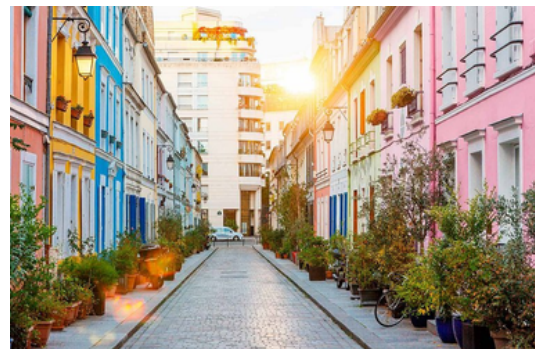
Musée de la Vie Romantique

Tucked away in the 9th arrondissement, this museum dedicated to the Romantic era features charming gardens and intimate exhibits



Rue Crémieux

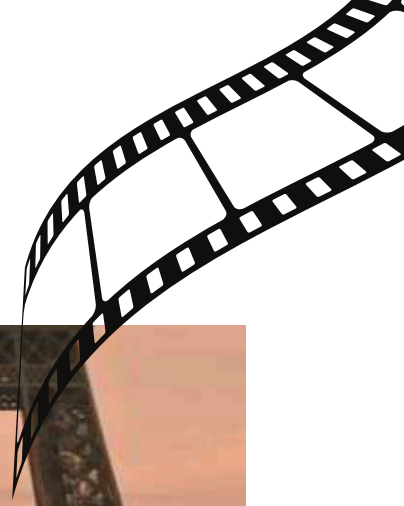
A picturesque street lined with colorful houses, Rue Crémieux is a favorite among photographers seeking a vibrant backdrop



Rue des Barres

A cobbled medieval street tucked behind the Seine in the Marais, where ivy-covered façades and peaceful cafés create the perfect Parisian moment





FAMOUS FILM LOCATIONS

Paris has long been the backdrop for some of cinema's most unforgettable moments. From dreamy love stories to high-stakes thrillers, the city's timeless beauty has captured the hearts of filmmakers and audiences alike.

In this section, you'll find iconic locations where famous scenes were shot – perfect for recreating your favorite movie moments or simply soaking up the magic.

So grab your camera, channel your inner film star, and step into the scene.



FILM SCENES

Café des Deux Moulins

Featured in *Amélie*, this Montmartre café retains its vintage charm and offers a nostalgic ambiance.



Pont de Bir-Hakeim

Recognizable from films like *Inception*, this bridge provides stunning views of the Eiffel Tower and the Seine.



Shakespeare and Company

This historic English-language bookstore appeared in *Before Sunset* and remains a literary haven on the Left Bank.





FILM SCENES

Place de la Concorde

A pivotal location in *The Devil Wears Prada*, this grand square is steeped in history and elegance.



Palais-Royal Gardens

Featured in *Mission: Impossible* and *The Da Vinci Code*, these gardens offer a blend of classical architecture and peaceful greenery.



Pont Alexandre III

This ornate bridge has starred in numerous films, including *Midnight in Paris* and *James Bond*. With its golden statues and elegant lamp posts, it's one of the most photogenic spots in the city – day or night.



ENJOY YOUR PARIS

